

MBUSI Service Parts

Supplier Guide

VAS2000 Label Software Installation Guide



Document History

| Version Number | Author User ID | Location of Change(s) | Summary of Changes | Date of Release |
|----------------|----------------|-----------------------|---------------------|-----------------|
| Version 1 | REBERCO | | Final Draft Version | 5/1/2022 |





Mercedes-Benz

VAS2000 Label Software Installation Guide

Table of Contents

- 1. Overview 4
- 2. Software Download 5
 - 2.1 Main Software 5
- 3. Software Installation 7
 - 3.1 Font File Installation..... 7
 - 3.2 Software Installation..... 8
- 4. Label Printing..... 13
 - 4.1 Settings 13
 - 4.2 Basic Part Label Printing 14
 - 4.3 Printing Labels with Color Codes or Other Indexes 15
 - 4.4 Printing Own Labels (Not in Master Database)..... 16
- 5. Updating the Part Number File 17
- 6. Ordering Labels 17

1. Overview

This software allows you to print spare parts labels which are compliant with the Mercedes Benz AG layout guidelines. The software uses a data file of all the current Mercedes-Benz Service part numbers to load the correct label information into the system for printing. The data file needs to be downloaded at regular intervals to ensure the software has the most up to date listing of part numbers, which includes **country of origin** and **best before date**.

The screenshot shows the VAS2000-Labels 4.3 software interface. The form is organized into several sections:

- Part Information:** Includes fields for Part number (A 167 740 25 00), AK1, and AK2 (9051). A Reload button is present.
- Label Information:** Includes Label part number (A 167 740 25 00 9051) and a Quantity field (highlighted in green).
- Part Name and Unit:** A table with columns for Part name and Unit, with rows for German, English, French, and Spanish.

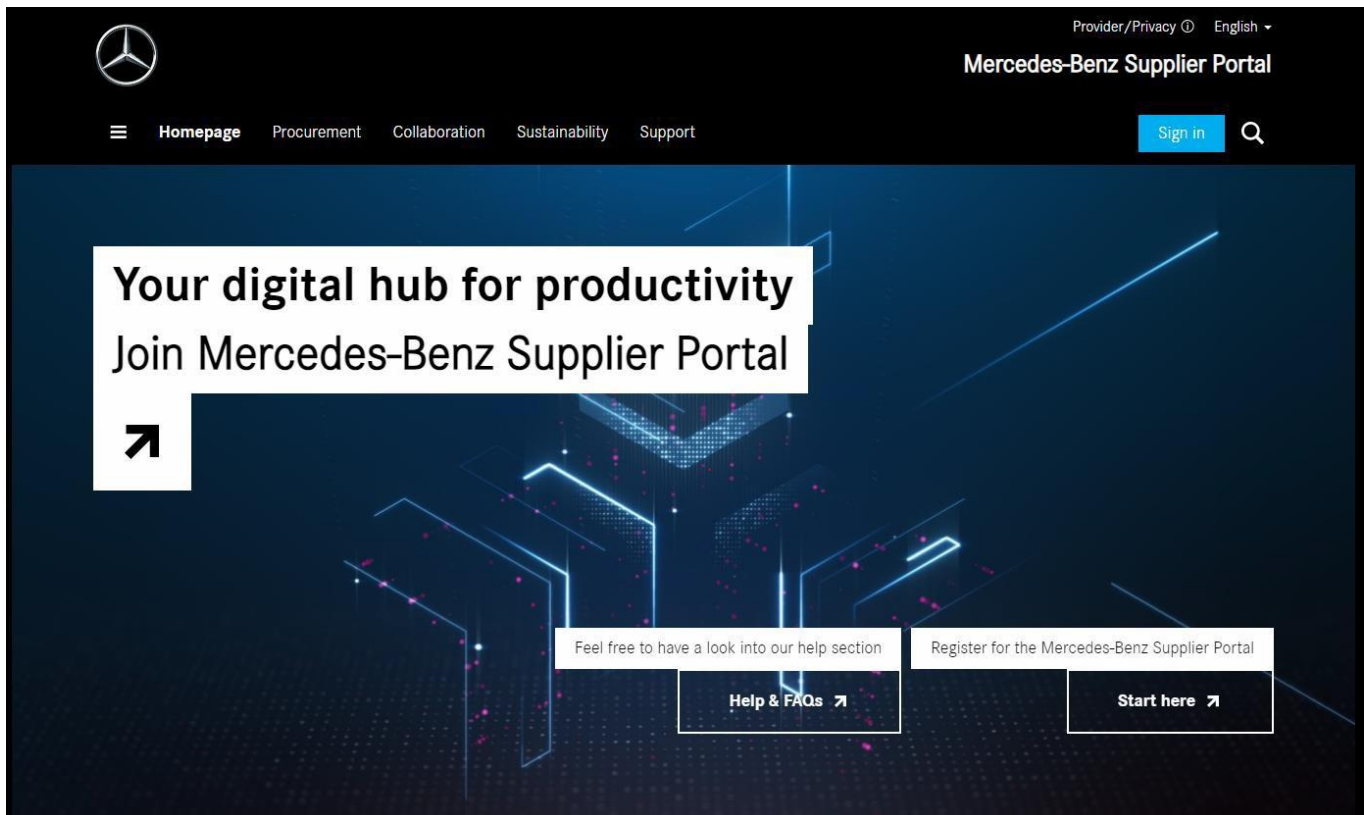
| | Part name | Unit |
|---------|----------------------|--------|
| German | VERKLEIDUNG | Stück |
| English | TRIM, REAR-END DOOR | unit |
| French | REVETEMENT DU HAYON | unité |
| Spanish | REVESTIMIENTO PUERTA | unidad |
- Production and Origin:** Includes Production date (Jun 16, 2020), Best before date, and Made in (UNITED STATES). Save and Delete buttons are present.
- Supplier and Label Settings:** Includes Supplier number, a checkbox for PE-LD labels, Number of labels, and a dropdown for MB label 100 x 40.
- Division-Code key:** A dropdown menu set to 'C'.
- Buttons:** Configure..., Print, and Close buttons are located at the bottom.

2. Software Download

2.1 Main Software

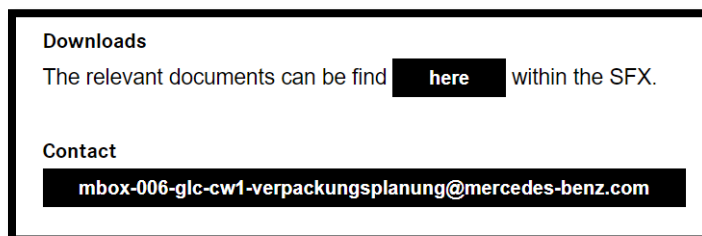
In order to download the VAS2000 label printing software you must first acquire from your system administrator a username login to the Mercedes-Benz Supplier Portal located at the following location:

Link: [Homepage | Mercedes-Benz Supplier Portal](#)



Login to the Mercedes-Benz portal and locate the following areas to download the software:

1. Click on the “Collaboration” tab located near the top of the home page
2. Click on “After-Sales”
3. Click on “Packaging Planing”
4. Click on “here” as shown below

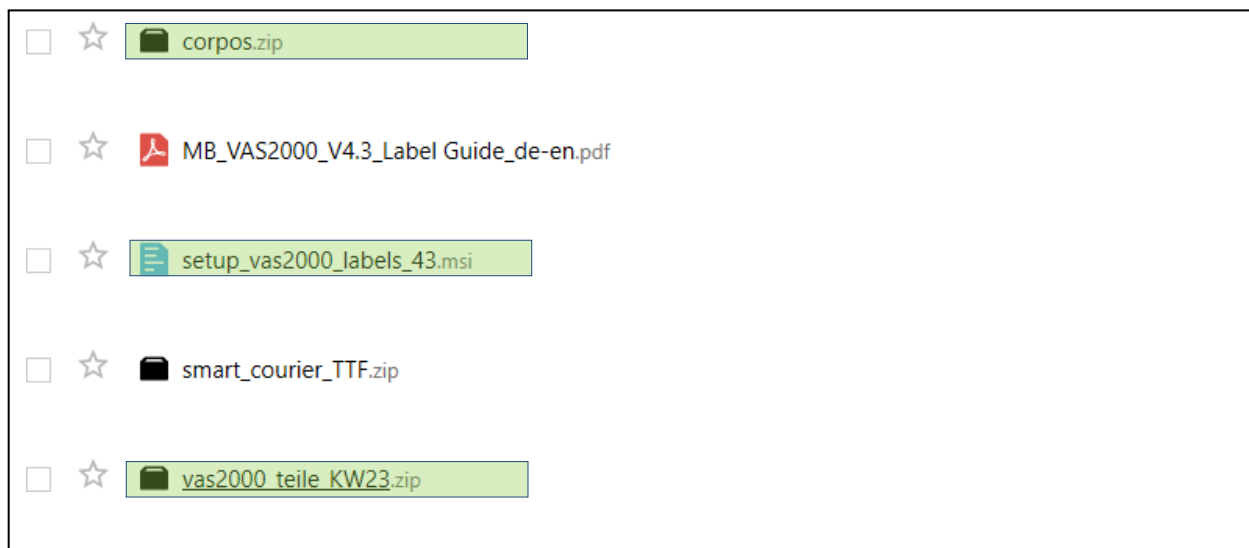


5. Click on “After-Sales”
6. Click on “VAS2000”

You will need to download the following files in the list:

1. setup_vas2000_labels <version>.msi – Main installer file which will install the label printing software onto the computer.
2. corpos.zip – Font files required to print the label in the correct format.
3. vas2000 teile KWXX.zip – Mercedes-Benz Service Parts master list.

NOTE: *XX will be replaced by the most recent file date. This teile file contains all of the current part numbers in the global system. This file needs to be updated regularly to ensure part number labels print with correct information. New part numbers and updates become available weekly so this file needs to be updated on the system where the software is installed. When a new VAS2000 software update is released, old part number files will not work with the new software. Conversely, new part number files are not compatible with old VAS2000 software versions. A complete software download is required when in this situation.*

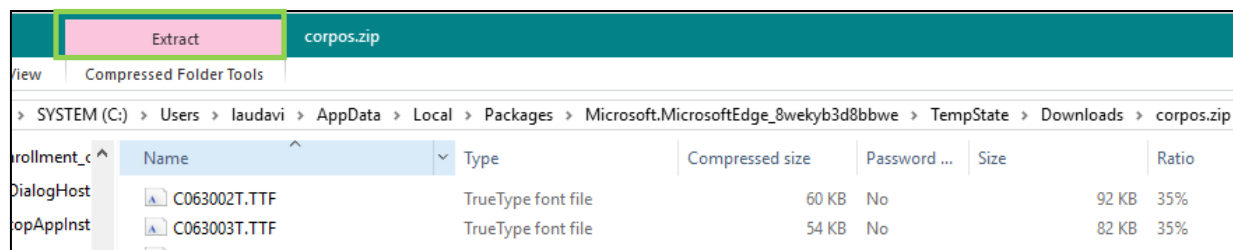


3. Software Installation

3.1 Font File Installation

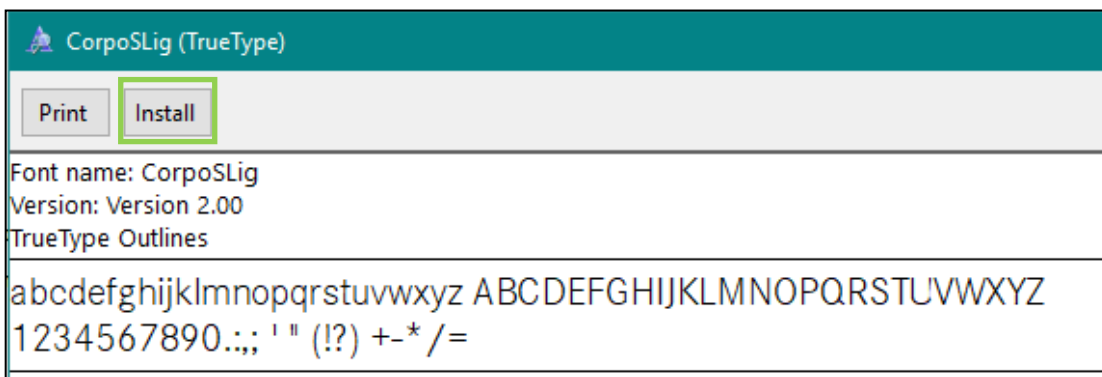
Install the font file by first unpacking the corporos.zip file which contains 18 font files. The fonts are not installed automatically by the setup program. **If the fonts have not been installed, the labels will not print correctly.**

Notice: On Windows 10 starting with release 1809, fonts can be installed for a Single user without administrator privileges. This will not work for VAS-Labels. The fonts "Corpos" must be installed "for all users". This will usually require windows administrator privileges for the installation.

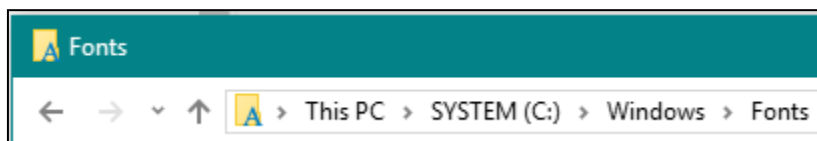


To install the fonts on newer versions of Windows open each file individually and click "Install".



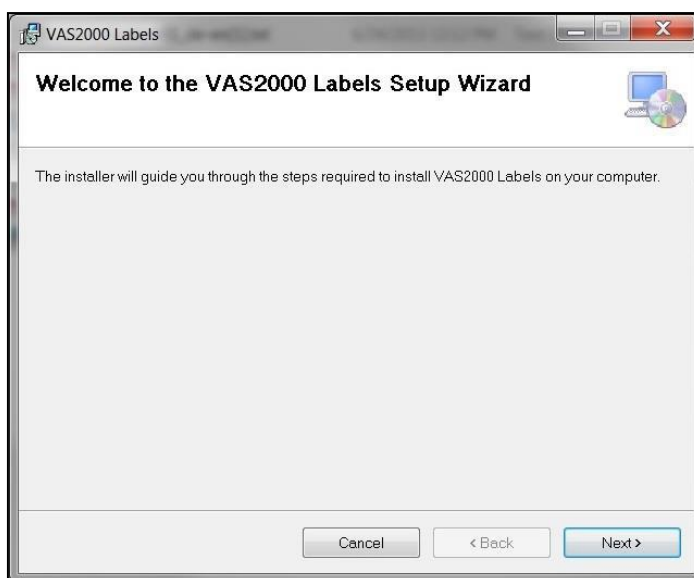


Alternatively the font files can be installed by copying the 18 files directly into the directory C:\Windows\Fonts\.

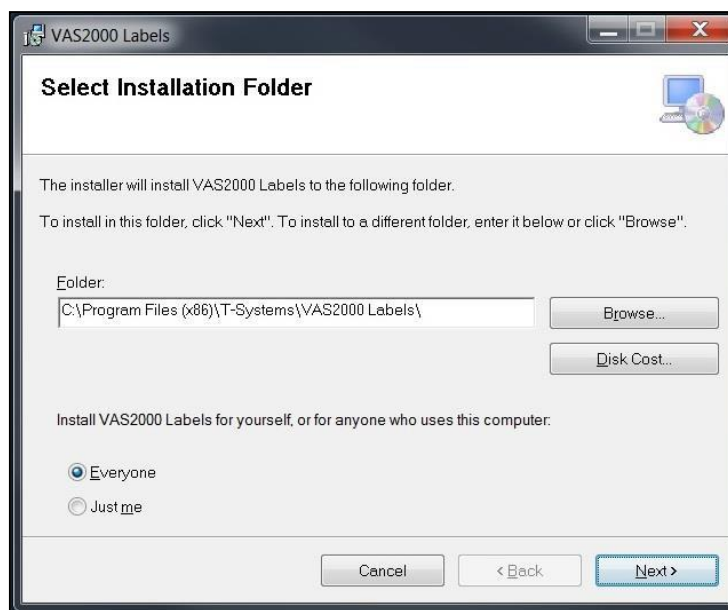


3.2 Software Installation

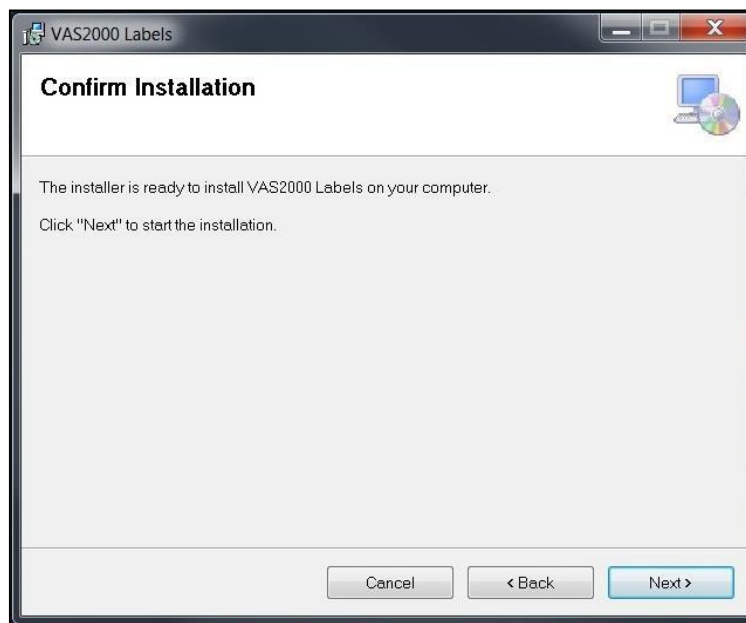
Open the `setup_vas2000_labels_<version>.msi` file. A user with administrator privileges is required. Click “Next”.



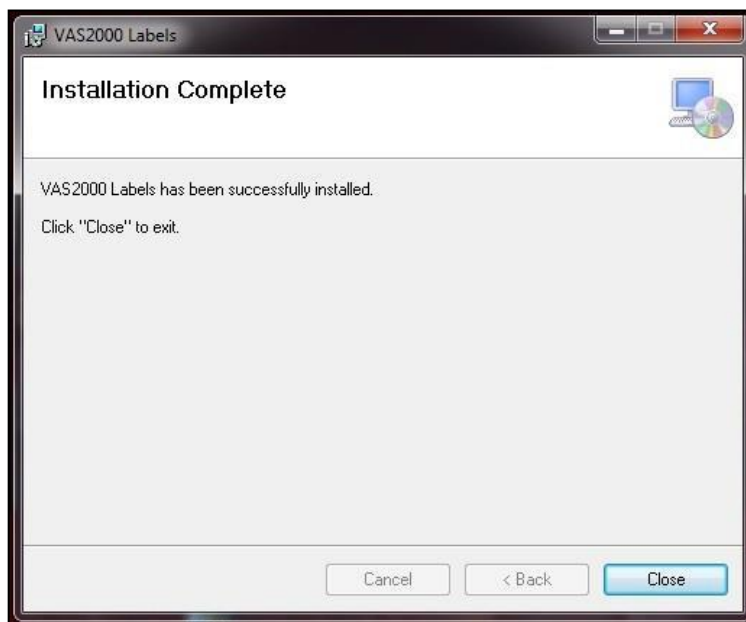
The software will install automatically to a default directory but you may change it if needed. Click “Next”.



Confirm the Installation. Click “Next”.



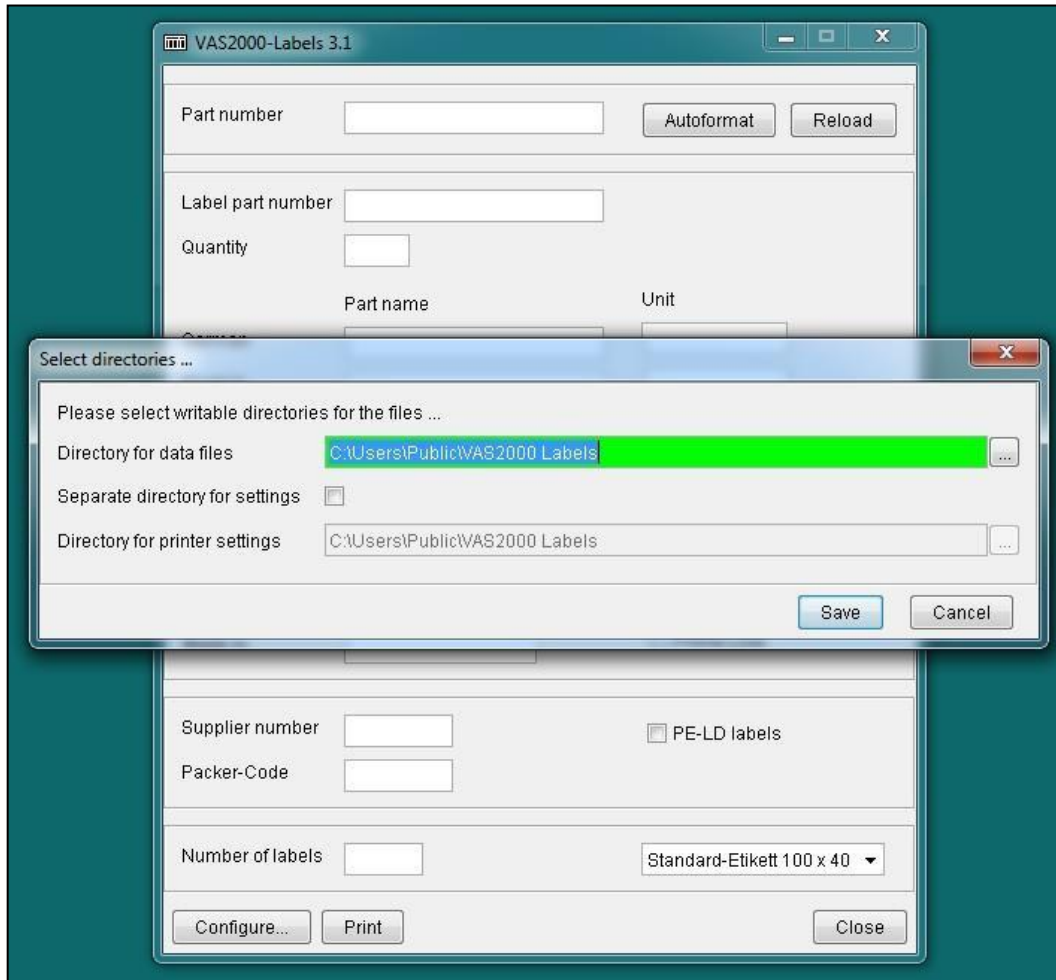
Once the installation is completed click “Close”.



The software will automatically install an icon on the desktop so the program can be loaded quickly.



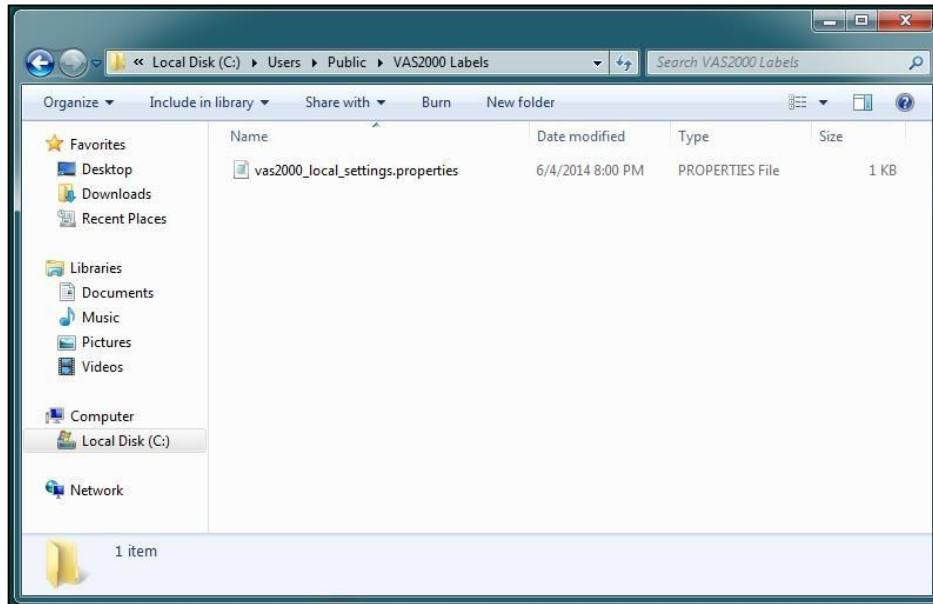
Double click on the “VAS2000 Labels” icon on the desktop which will open the software. This will create a default folder for the part numbers to be loaded from. A default folder is chosen automatically “C:\Users\Public\VAS2000 Labels\” but a different one may be specified. This is the folder where all part numbers will be loaded as well as where the newest version of the **vas2000_teile.dat** file needs to be copied to. Click “Save”.



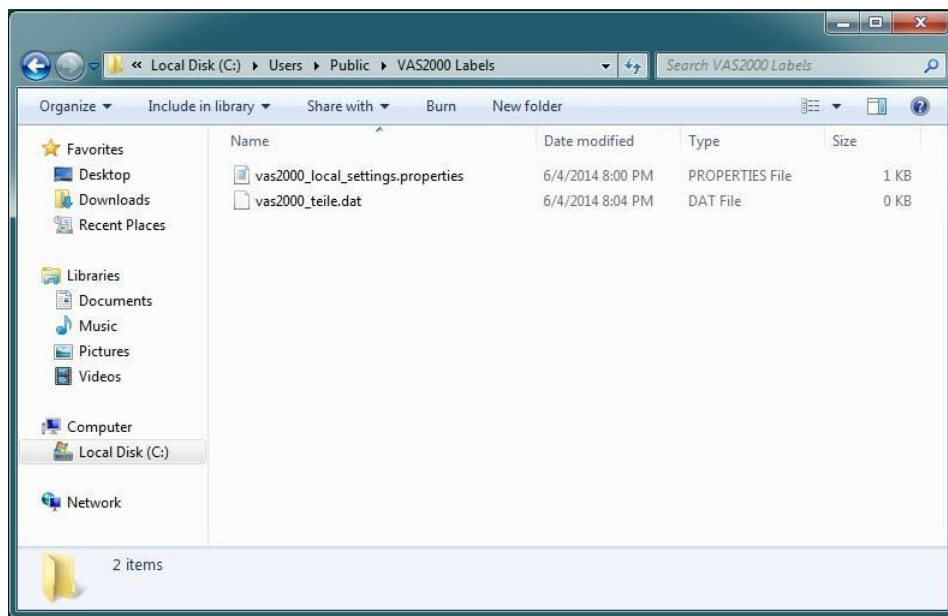
You will receive an error asking for the vas2000_teile.dat file to be copied into the directory. This will close the program but this step is required for the initial setup in order to create the default save folder. Click “OK”.



Navigate to the “C:\Users\Public\VAS2000 Labels\” folder.



Copy the latest `vas2000_teile.dat` file to this folder. **This is where you will always copy the newest file to replace the older versions since new part numbers get added to this file regularly.**



This will complete the installation. The program will now open and allow you to start printing labels.

4. Label Printing

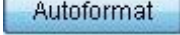
4.1 Settings

Before printing labels click the “Configure...” button to set up the default settings.

General Settings:

| | |
|---|--|
| Default Supplier Number | Supplier number used as default value |
| Network name of the print | Network name (e.g. \\server\prin |
| Horizontal/Vertical offset | Initial position top left |
| Number of labels horizontal/vertical | Quantity of labels which can be placed horizontally or vertically on each side of the page |
| First label horizontal/vertical | Position of the first label (top left) |
| Horizontal / Vertical distance | Distance between labels (horizontally/vertically) |
| Autoformat | Enable/disable automatic formatting of part numbers |
| Print content confirmation line | Enable/disable printing of the content conformation line |

4.2 Basic Part Label Printing

1. Make sure the Autoformat button is selected 
2. Enter the part number in the Part number field and press TAB

key Part Number Rules

- a. Enter the first letter as a capital
- b. Enter the remaining numbers of the part number **without** spaces.

Example: “A1669007009” instead of “A 166 900 70 09”

3. If part has a **color code** enter in **AK2**
4. Input “Quantity” (number of parts per package)
5. Input “Production date” – **Date the part was produced**
6. Input “Best before date” if applicable (most parts do not use this)
7. If missing, enter the correct “Made in” country – **Country of ORIGIN**
 - a. Format Example:
 - i. UNITED STATES not USA
 - ii. MEXICO not MX
8. Input “Number of labels” to print and click print

Below is an example of a correctly printed label with a “best before” date:



VAS2000 Labels - Field Information

| | |
|------------------------------|--|
| Part Number | Part Number |
| AK1 / AK2 | Used for body part denotation / color code. |
| Autoformat Button | Automatic formatting of the part number according to DCAG format |
| Reload Button | Reloading part data from the master file or custom data |
| Label part number | Number to be printed on the label |
| Quantity | Quantity of parts in one package |
| Part name / Unit | Description of part and unit |
| Production Date | Date the part was manufactured |
| Best before date | Only used for special parts (chemicals). Leave blank if not necessary |
| Made in | Country of origin |
| Save / Delete Buttons | Save/Delete current custom information in the vas2000_custom.dat file |
| Prime Line | Printing Prime-Line-Identifier |
| PE-LD Label | Check this if you use a polyethylene label. Leave blank for paper labels |
| Supplier number | Supplier code (can be set to default in the configure settings) |
| Number of labels | Number of labels to print |

4.3 Printing Labels with Color Codes or Other Indexes

Some part numbers will have a color code indicator or other production codes. To enter these parts correctly use the following format:

Part numbers are based off of a 21 character system with color code being the last 4 characters in the sequence.

1. Enter the base part number in the Part Number field.
2. AK1 = For Body Parts. Enter the proper "7XXX" suffix.
3. AK2 = Color Code. Enter color code.

The screenshot shows a software window titled "VAS2000-Labels 4.0.1". Inside the window, there is a "Part number" field with the text "A 251 720 26 95". To the right of this field are two smaller fields labeled "AK1" and "AK2". The "AK2" field contains the text "9D88". Below these fields are two buttons: "Autoformat" and "Reload".

4.4 Printing Own Labels (Not in Master Database)

If the updated VAS2000_teile.dat master data file is missing a part number custom data can be manually entered and saved for future printing. Enter the missing data and click the “Save” button. New part numbers can be saved if no data exists. To ensure the spelling in the languages is correct please **contact your Mercedes-Benz Packaging Specialist** for assistance. *Please note: it is preferred that your software file is updated, not manually entered.*

Save – This function will save the part number data into a new file called VAS2000_custom.dat. You can load data from this file if the part number is missing. The custom file will not overwrite the VAS2000_teile.dat file.

Delete – This function will delete custom data entered in for part numbers only from the VAS2000_custom.dat file.

When you first attempt to load a part number it searches the VAS2000_custom.dat first. If your master file is up to date and you have custom information you will need to “delete” it from the custom data file first before pulling up the correct part number information.

Copy and Paste “Unit” Language

Use the following to copy and paste the correct spelling of “unit” in the 4 languages.

| | Part name | Unit |
|---------|---|-------------------------------------|
| German | <input type="text" value="LENKGETRIEBE"/> | <input type="text" value="Stück"/> |
| English | <input type="text" value="STEERING GEAR"/> | <input type="text" value="unit"/> |
| French | <input type="text" value="BOITIER DE DIRECTION"/> | <input type="text" value="unité"/> |
| Spanish | <input type="text" value="MECANISMO DE DIRECCION"/> | <input type="text" value="unidad"/> |

| Language | Correct Spelling |
|----------|------------------|
| German | Stück |
| English | unit |
| French | unité |
| Spanish | unidad |

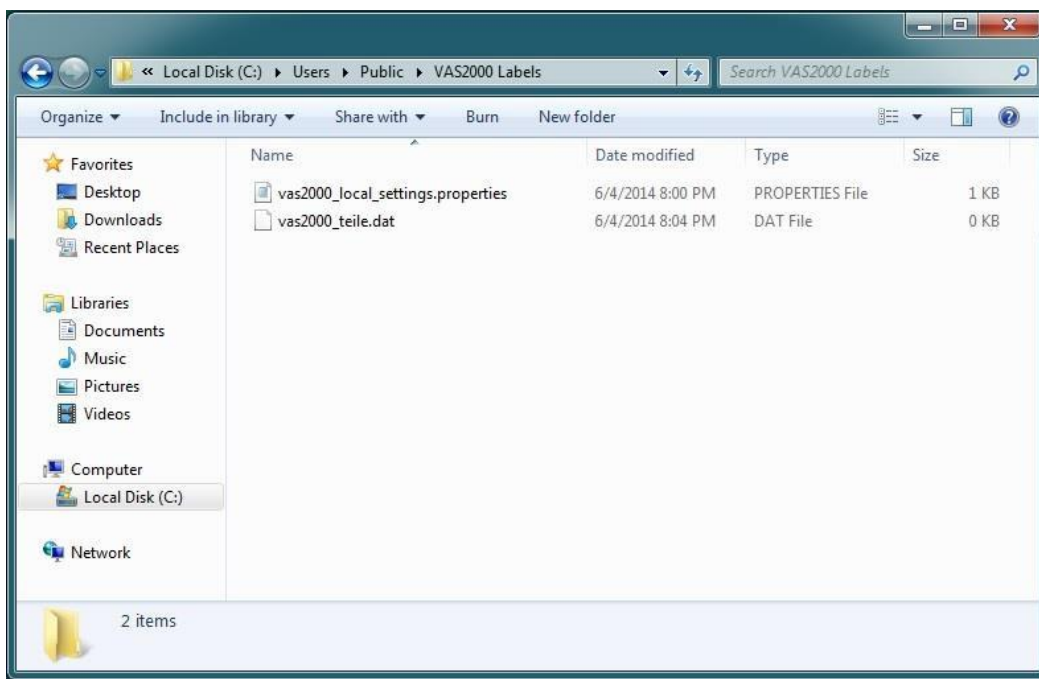
5. Updating the Part Number File

The part number file needs to be updated at regular intervals in order to make sure the newest part numbers can be printed correctly. In order to update the file follow these steps:

1. Download the latest version of the **vas2000_teileKWDD.zip** file. This will be on the Mercedes-Benz portal in the “After-Sales Download Area”.
2. Locate the default save location for the VAS2000 Labels Software. The standard default directory will be “C:\Users\Public\VAS2000 Labels\”.

Note: If your default folder was changed to a different directory during the software installation, you will need to locate that directory to place the updated file in.

3. Unpack the **vas2000_teileKWDD.zip** and copy the **vas2000_teile.dat** file into this folder overwriting the old file.





6. Ordering Labels

Labels can be ordered in different styles with the most common being either a continuous feed fan fold label stock or an 8.5 x 11” sheet style. Before choosing which style to use be sure that your current selected printer will interface with the software. To order labels, you **must** use the Mercedes approved label provider below:

LaPerla LLC

806 South 29th St. Ste C
Harrisburg, PA 17111

Patrick Bowen
Phone: (717) 561-1257
Fax: (866) 885-4231
E-mail: Patrick@LaPerlaLLC.com
E-mail 2: Carmen@LaPerlaLLC.com

| Label Style Reference | | | | | |
|-----------------------|--------------------------|-----------------------------|-----------------------|-----------------------|---|
| Supplier Part # | Style | Size | Labels Per Pack | Labels Per Box | Photo |
| B4LBMrcd FF | Fan Fold Continuous Feed | 4" x 1.5625" | 5,000 | 20,000 (4 Packs) |  |
| MBB4SHEETED | Sheet (8.5x11") | 12 labels per 8.5x11" sheet | 3,000 (250 Sheets) | 3,000 (250 Sheets) |  |



Created on: 5/1/2022
Reviewed on: 4/19/2024